

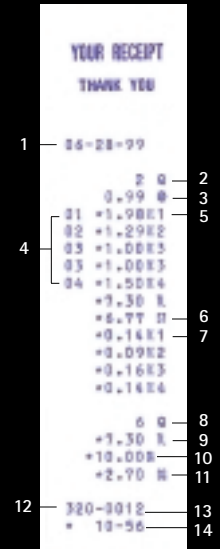
ER-A320

electronic cash register

REPORT TITLE	DESCRIPTION
Full Report (General)	Combines information from departments and transaction media totals. This report is used as the audit report for your business.
PLU Report (Full)	Provides an analysis of the details of those items rung up at the ECR that have been pre-programmed.
PLU Report (Range)	Allows the store owner to analyze PLU sales data by a specified range of PLU codes.
Hourly Report (All/Range)	Provides the store owner with the number of transactions and sales total by 1-hour increments for a 24-hour period. This becomes a useful tool in determining which times during the day your business is most successful. The Hourly report can also be useful in determining when extra employees are necessary.
Department Group Report	Consolidates departments into like categories to provide summary sales data analysis of your business.
Individual Group Report	Allows the store owner to select a specific group number for which to analyze associated department sales data.
PLU by Assoc. Department	Allows item sales analysis by product or vendor category. This is extremely beneficial when determining successful items to be stocked.
Transaction Report	Provides all related media accountability for the business day, which can justify collected monies for items sold.
Full Cashier Report	Provides sales and media accountability for up to (6) Cashiers who have made sales entries.
Individual Cashier Report	Allows the store owner or manager to audit each individual's sales and media accountability one person at a time.
Daily Net Report	Provides the net sales total by calendar day for a 31-day period. Business revenues are easily tracked by each day of the month.
Stacked Reports	Prints a maximum of 15 reports in succession within a single reporting operation.
Flash Reports	Allows the store owner or manager to view a defined total in the ECR's display for quick, up-to-the-moment analysis of that day's business. Available Flash Reports include: <ul style="list-style-type: none"> • Net-3 (net sales plus tax) • Department (by selected departments) • Dept / Group (by selected department group number) • Hourly (by selected time) • Cash-in Drawer (total cash in drawer)

RECEIPT

Upon completion of each transaction, the following information is automatically printed on a receipt: date, department number, unit quantity, unit price, merchandise subtotal, tax status, tax amount, total, cash tendered, change, consecutive number, register number, and time.



1. Date
2. Unit Quantity
3. Unit Price
4. Department Number
5. Tax Status
6. Merchandise Subtotal
7. Tax Amount
8. Total Unit Quantity
9. Total
10. Cash Tendered
11. Cash Change
12. Register Number
13. Consecutive Number
14. Time

ER-A320 SPECIFICATIONS

DISPLAY		PRINTER		DRAWER	
Type	L.E.D. Green Display	Type	2-position Print Wheel Selective Type	Bill	5 Compartments
Operator	1 Line/10 Digit Numeric, 7 Segments	Printing Speed	Approx. 2.5 Lines/sec.	Coin	5 Compartments
Customer (pop-up)	7 Digits/7 Segments	Printing Digit	Receipt: 10/Journal: 10	GENERAL	
Symbols	1 Digit • Minus: - • Error: E • Subtotal: O • Change: C • Finalized: F	Paper Width	1-3/4" ± 1/32" (44.5 mm ± 0.5mm)	Components	CPU, RAM, ROM, etc.
		Paper Roll Diameter	3-5/32" (80 mm) (Max.)	Dimensions (W) x (D) x (H)	16.5" x 16.7" x 12.0" (420 x 423 x 304 mm)
Repeat	1 Digit	Additional Functions	<ul style="list-style-type: none"> • Receipt/Journal Independent Feeding • On/Off Receipt Key • 2-Ply Single Line Validation • Journal Near End Paper Sensor • Built-in Rechargeable Battery 	Recommended Temperature	32°F-104°F (0°C-40°C)
Department	2 Digits			Weight	28.7 lbs (13 kg)
TOTALIZING CAPACITY				Power Supply	Official (Normal) Voltage and Frequency
Grand Total	13 Digits			Power Consumption	31W (Max.), 10W (Standby)
Other Total	10 Digits				

Design and specifications are subject to change without notice.

Distributed by:

SHARP
FROM SHARP MINDS
COME SHARP PRODUCTS™

SHARP ELECTRONICS CORPORATION
SHARP PLAZA
MAHWAH, NEW JERSEY 07430-2135
www.sharp-usa.com
USA PHONE: 1-800-BE-SHARP

ECR-928

ER-A320

electronic cash register



Power, convenience,
and efficiency to
keep your business
running at top speed



Flexibility
Power
Reliability
Convenience

SHARP®

Designed for demanding retail and hospitality environments, the compact ER-A320 electronic cash register is the easy-to-use, powerful workhorse your small business needs. Rich in features, functionality and value, yet small in size, the ER-A320 offers increased control and flexibility, giving you important information about your business when you need it most. Enhanced software functions provide valuable information at the point of sale, so you can carefully analyze data that's critical to the success of your business.

Take a closer look at the ER-A320. It's much more than a cash register...from the name more people rely on...Sharp.

"Plug and Play" Simplicity

Out of the box, the ER-A320 requires minimal programming and set-up, so you can be up and running in no time. With minimal training, even the most inexperienced operator can be checking out customers with ease. Yet the ER-A320 has the power where it counts. The advanced programming capabilities of the ER-A320 are incredibly user friendly and allow you to tailor functions specifically to your operation. With true customization built right in, the ER-A320 makes it easier to manage your business the way you want to...one customer at a time.

The Sharp ER-A320 E

Enhanced Features To Keep Yo



Performance At Your Fingertips

With prominent keys and a large, easy-to-read LED display, the efficient ER-A320 provides quick access and one-touch recall through Auto keys allowing you to handle peak periods with increased accuracy and speed. The ER-A320 quickly streamlines customer check-outs with 600 convenient PLUs (price look-ups) and 10 department keys (upgradable to 40). The ER-A320 makes it easy to pre-program PLUs so that the prices of popularly sold items—or items on special—can be accessed instantly. The ER-A320 even has a built-in calculator function, providing managers with a useful tool for balancing the cash drawer, or a handy feature for operators who need to perform fast calculations.

Advanced Reporting System

The ER-A320 can help you stay on top of your business with advanced software features that provide detailed information about your sales. This powerful workhorse can generate over ten separate reports for tracking sales data, inventory, departments, number of transactions, and more. For a quick, up-to-the-minute analysis of the day's business, choose one of five paperless flash reports—easily viewed in the ECR's large LED 10-digit operator display. Need a printed report instead? The reliable, super heavy-duty printer can handle even the busiest establishments with speedy, high-quality output...day after day.



Electronic Cash Register

our Business Running At Top Speed

Sharp's Proven Reliability

Sharp, the industry leader in performance and reliability, designed the ER-A320 to deliver years of consistent service under the most demanding environments. This reliable performer is a compact dynamo with big cash register features, incredible versatility, and valuable tools that can help you grow your business. For the power, convenience, and efficiency to keep your business running at top speed, rely on the Sharp ER-A320.

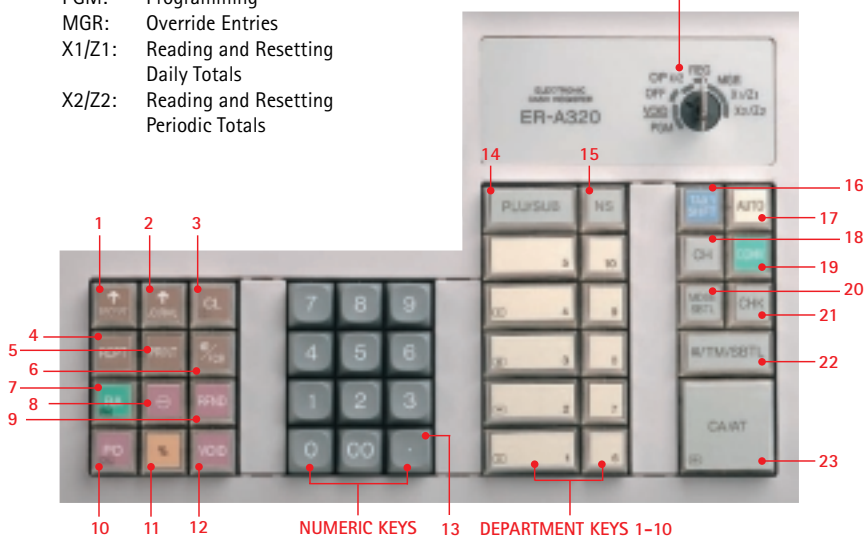


THE ER-A320: ADVANCED FEATURES AT A GLANCE.

Mode Switch

- REG: For Entering Sales
- OP X/Z: Reading and Resetting of Cashiers Totals, Display of Flash Reports
- OFF: Prevents Key Entry
- VOID: Cancellation After the Finish of Transaction
- PGM: Programming
- MGR: Override Entries
- X1/Z1: Reading and Resetting Daily Totals
- X2/Z2: Reading and Resetting Periodic Totals

MODE SWITCH



- 1 Receipt Paper Feed Key
- 2 Journal Paper Feed Key
- 3 Clear Key
- 4 Receipt Issue Key
- 5 Validation Print Key
- 6 Multiplication/Split Pricing Key
- 7 Received-On-Account Key
- 8 Discount Key
- 9 Refund Key
- 10 Paid-Out Key
- 11 Percent Key
- 12 Void Key
- 13 Decimal Point Key
- 14 Price Look-Up/Subdepartment Key
- 15 No-Sale Key
- 16 Tax Shift Key
- 17 Auto Function Key
- 18 Charge Key
- 19 Conversion Key For Foreign Currency
- 20 Merchandise Subtotal Key
- 21 Check Key
- 22 Non-Add/Time Display/Subtotal Key
- 23 Cash/Amount Tendered Key

Other Great Features

- Manager Control Function
- Department Grouping Function
- 3-Digit PLU Free Code
- 4 Tax Tables
- Auto Keys (2 max)
- Training Mode Function
- Single-Line Validation Printing
- HALO (High Amount Lock Out)